



## SITL NEW PRODUCTS GUIDE

### INTERNATIONAL TRANSPORT AND LOGISTICS EXHIBITION 2026 (SITL)

*“New territories to conquer”*

*Paris Nord Villepinte, Hall 7, 31 March-2 April 2026*

**As a leading platform for concrete solutions—where best practices meet inspiring insights—SITL, a true accelerator of connections and innovation, presents its New Products Guide, showcasing 583 solutions on display.**

For this 43rd edition, 28,000 professionals—primarily decision-makers and key influencers—are expected to attend, alongside more than 560 exhibitors (transport and logistics providers, infrastructure and regional stakeholders, service providers, shippers, public authorities, federations and policymakers).

Visitors will also benefit from a programme of 80 conferences structured around five key themes:

- New territories to conquer in digitalisation
- New territories to conquer in sustainable development
- New territories to conquer in mobility and infrastructure
- New territories to conquer in talent management and organisation
- New territories to conquer internationally

#### **Highlights of the 2026 edition include:**

- **The SITL Start-up Contest, now open to both exhibitors and non-exhibitors**, reflecting the full diversity of the ecosystem
- **An even more European-focused edition**, building on the Métamorphose cycle, with a strong emphasis on cross-border cooperation and the logistics of tomorrow
- **An immersive and collaborative programme, with over 80 conferences** and workshops addressing major transformations (ecological transition, decarbonisation, AI, robotics, urban logistics), structured into themed days to move from insight to real-world feedback
- **The Métamorphose Center** as a central hub of the exhibition: **Tech’xploration, Smart Solutions Tours, SITL CoLAB, workshops and the Innovation Festival**—bringing together inspiration, experimentation and exchange
- **Five themed villages** to guide visitors: **Last Mile, Multimodal, Hazardous Materials, Campus and Solutions Hub**
- **An enhanced business experience with MySITL, with more than 3,400 pre-scheduled meetings** to connect visitors and exhibitors efficiently
- **Three demonstration zones:** Last Mile Demo, Robot Demo and Drone Demo—short, practical showcases of tomorrow’s solutions in real-life conditions

## Regional Planning / Urban Logistics

### JUNGHEINRICH FRANCE – Stand L030

The ERE 1i is a compact, highly manoeuvrable stand-on pallet truck built around lithium-ion technology.

It has been designed primarily for goods transfer operations and truck loading and unloading. It benefits from a new generation of lithium-ion batteries and integrated chargers.

Together, these two innovations give the ERE 1i greater availability and an improved price-performance ratio.



## Attractiveness / HR / Training

### LES BOITES A VELO - CYCLO-CARGOLOGIE – Stand P111

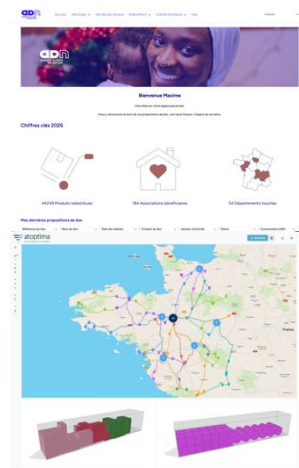
This training programme combines theory, practical scenarios and feedback to support lasting skills development. Structured around three complementary tracks — delivery, dispatch and management — it helps professionals master the operational, human and regulatory challenges of cycle logistics.



## Decarbonising transport

### Agence du Don en Nature – Stand L147

The **Donors' Platform** enables companies that donate products to Agence du Don en Nature to track exactly what happens to their donations. It centralises the history of offers, deliveries, tax receipts, distribution indicators and field feedback, providing greater traceability, oversight and value recognition for donation initiatives.



### ATOPTIMA – Stand L140

**Route&PackSolver** simultaneously optimises transport planning and loading plans while taking even the most complex operational constraints into account. This approach significantly reduces operating costs and CO<sub>2</sub> emissions, while substantially increasing productivity.

### Container Equipment and Lashing – Stand L101

The **HP2100 Lockbar® type VBHS V3** high-security locking bar is an anti-intrusion device designed to secure dry and reefer containers. Unique on the market, it protects the locking bar, delays intrusion attempts and significantly strengthens the security of container transport thanks to its virtually tamper-proof design.



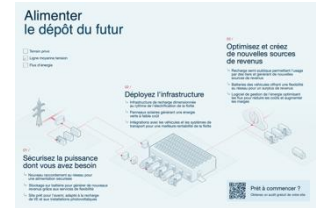
### DB Cargo France – Stand N078

With its combined rail-road transport offer, **DB Cargo France** provides a solution for consolidating and pooling flows that can reduce CO<sub>2</sub> emissions by up to 80%. Managed centrally through a single point of contact, this approach secures logistics links while making it easier for shippers to integrate rail into their transport schemes.



### Decade Energy – Stand L130

**Decade Energy** offers an integrated battery energy storage solution to support fleet electrification at logistics sites. Its power-as-a-service model secures available power, optimises energy flows in real time and helps accelerate decarbonisation without waiting for major grid upgrades or requiring significant CAPEX.



### GEODIS – Stand N090

By expanding its **Mass Balance** scheme, **GEODIS** enables customers to significantly reduce their CO<sub>2</sub> emissions without changing their transport patterns. Now open to several low-carbon energy sources, the scheme combines flexibility, traceability and measurable decarbonisation.



### GRAIN DE SAIL LOGISTICS – Stand N132

**Grain de Sail Logistics** offers very low-carbon transatlantic shipping through a fleet of cargo sailing vessels powered by wind propulsion and renewable energy. This offer combines tangible decarbonisation, operational reliability and solutions tailored to the requirements of sensitive sectors such as luxury, cosmetics and food.



### HANGZHOU AONENG POWER SUPPLY EQUIPMENT CO., LTD. – Stand R063

1- **ANDCE1-30LP** is a 30 kW DC charging station designed for professional use, featuring a CCS2 connector, touchscreen, 4G/Ethernet connectivity and OCPP 1.6J compatibility. Compact and easy to deploy, it meets the charging needs of logistics and industrial environments.



2- **ANDCE1-60LP2** is a 60 kW DC fast charger with dual CCS2 connectors, designed to give operators greater flexibility through multiple activation modes, advanced connectivity and an architecture suited to intensive use. It supports simultaneous charging and integrates easily into evolving professional infrastructures.



3- **High-Power DC Ultra-Fast Charger** is a high-power ultra-fast charging solution, available from 120 to 360 kW, designed to support the rise of heavy electric mobility. With dual CCS Combo 2 connectors and high output currents, it prepares logistics sites for future high-speed charging needs.



## JUNGHEINRICH FRANCE - L030

1- The **EAE 212a mobile robot** streamlines flow automation through easy integration, high flexibility and rapid scalability. Designed for floor-level lifting applications, it sustainably improves warehouse efficiency with smart features and remote updates.



2- The **AME 15 and AME 18** set a new benchmark in the light pallet truck segment, combining a compact footprint, robust design and excellent manoeuvrability. Designed for urban delivery, retail and constrained environments, they bring together performance, lithium-ion technology and enhanced safety.



3- The **PTL 1.5** is a compact, versatile and easy-to-use entry-level electric pallet truck, designed for everyday operations in warehouses, stores and trucks. Equipped with modern lithium-ion technology and available in multiple fork lengths, it combines reliability, flexibility and fast deployment.



4- The **EJE C20i** expands the electric pallet truck range with a more compact and manoeuvrable model, fully equipped with lithium-ion batteries. Designed for tight spaces, it also enhances workstation ergonomics with an adapted lift height and improves safety through an active protection strip that reduces accident risks.



5- The new **EFG 2i and 3i electric forklift trucks** introduce a redesigned generation combining compactness, comfort, performance and safety. With a more compact design, multiple performance levels and various energy options, they meet the demands of intensive operations while supporting the electrification of intralogistics.



## KEMPOWER – Stand P049, P043

The **Kempower Mega Satellite MCS** is an ultra-high-power charging solution designed for the electrification of heavy-duty fleets and high-intensity logistics sites. It significantly reduces charging times while preparing infrastructure for the future of electric heavy transport.



## LES BOITES À VELO - CYCLO-CARGOLOGIE – Stand P111

This support programme helps companies assess the real potential of cycle logistics through testing in real-life conditions. Fully managed, it removes operational, technical and organisational barriers, making it easier to integrate low-carbon cargo bike flows.



## Oléo – N055

**Oleo100** is a 100% rapeseed, 100% French energy solution, produced from locally grown crops and designed to decarbonise road transport. Its traceability is certified under the RED directive, ensuring the sustainability of the raw material and the credibility of greenhouse gas emission reductions, while strengthening national energy sovereignty.



### Sensolus – Stand E180

**TRACK 1105** is a robust, low-power tracker designed for long-term monitoring of logistics assets using NB-IoT and LTE-M connectivity. It improves visibility across equipment and flows, while enabling more efficient, cost-effective and reliable field operations.



### SIGMA - Stand H167

To meet regulatory requirements and emission reduction targets, **SIGMA** is enhancing its **Lixa TMS** with tools to support the selection of more responsible carriers and the calculation of CO<sub>2</sub> emissions. Carriers engaged in the Ademe **Fret 21** initiative are identified through a dedicated visual marker during the selection process. An algorithm then calculates emissions based on the chosen transport mode, shipment weight, distance travelled and empty return rate. At the invoicing stage, if emissions data is provided by the carrier, it is automatically integrated into the reporting tool, feeding directly into performance indicators.



## Supply chain reorganisation

### CENOBOTS - Stand N031

**CenoBots L3** is an autonomous cleaning robot designed for logistics and industrial environments. Powered by embedded AI, it analyses its surroundings in real time, avoids obstacles and adapts to operational flows without disruption. Unlike fixed-path solutions, it offers advanced autonomy and high deployment flexibility. Its **“Follow Me”** mode simplifies route creation, while cloud-based fleet management enables real-time monitoring of performance and equipment status.



### COMBILIFT – Stand J001

The **Aisle Master** is an articulated forklift designed to significantly increase storage density by operating in very narrow aisles. Robust and versatile, and suitable for both indoor and outdoor use, it improves productivity, reduces double handling and optimises warehouse space utilisation.



### DELCAIN - Stand E185

**Deltracker** is a solution designed to optimise parcel sorting in CEP warehouses. It projects destination information directly onto parcels by querying the customer database in real time, making operators’ work easier and improving productivity. The system eliminates the need for handheld devices, frees up operators’ hands and automatically generates tracking events in the WMS. It also brings greater flexibility to sorting plan management, adapts to different labelling formats and simplifies team training.



### JLL SUPPLY CHAIN CONSULTING – Stand R021

The “**Supply Chain Flash Panorama**” is a rapid three-day diagnostic designed to quickly identify improvement levers at a site. It results in a concrete roadmap covering facilities, processes, organisation, economic performance and people-related challenges.



### KÖRBER SUPPLY CHAIN – Stand N034

**Mono Gantry 2.0** is a fully redesigned layer-picking solution, delivering improved speed, energy efficiency and scalability. Compatible with autonomous mobile robots, it enables more flexible, compact and high-performance installations for pallet operations.



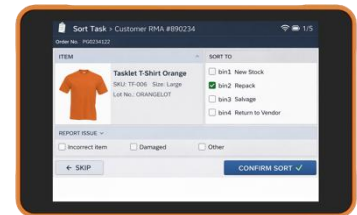
### MODULA SARL – Stand M006

**Modula Long Goods** applies the goods-to-person principle to the storage of long and bulky items. This automated solution improves safety, ergonomics and flow organisation, while reducing floor space requirements and enhancing traceability through structured digital management.



### PROGLOVE (WORKAROUND) - Stand H150

**LANA** is an Android wearable terminal designed to execute complex logistics workflows directly in the field. Natively integrated into the ProGlove ecosystem, it combines the visibility of a larger screen with high mobility, making it easier to handle exceptions and guided processes in warehouses. Robust and compact, it is suited to demanding environments and enables operators to see, decide and act more efficiently. Its advanced connectivity and compatibility with leading fleet management tools also support large-scale deployment.



### SHIPTIFY – Stand G117

With its **3PL Edition**, **ShiptiDock** adapts dock and appointment scheduling to the needs of large-scale, multi-client warehouses. The solution improves flow fluidity, secures site access and optimises dock utilisation in high-traffic environments.

Time	Slotify ID	Status
14:00	1 Slotify 13579	1 Complet
14:00	2 Slotify 24680	1 Citerne Vrac
14:30	Slotify 456789	120' container
14:30	Slotify 98765	1 Citerne Vrac

### SIGMA – Stand H167

SIGMA offers an automated reconciliation feature that checks, for each transport order, the amounts invoiced by carriers against contractual or negotiated rates. The system verifies both the main charge and additional costs line by line, comparing invoiced and pre-invoiced amounts. This automation improves cost control and facilitates either supplier payment or dispute management.



### SSI SCHAEFER FRANCE - N038

1- **SSI Piece Picking** is a robotic solution capable of picking up to 1,200 small items per hour with a very high level of precision. Combining AI, vision technology and integrated scanning and weighing functions, it automates fine picking, reduces errors and adapts to a wide variety of products.



2- **FastBots** introduces a new generation of intralogistics automation based on a fleet of autonomous robots capable of moving freely throughout the warehouse. This approach delivers greater agility, modularity and resilience, while maintaining high operational performance.



### TDI – Stand J154

**Expricing** now integrates artificial intelligence to automatically analyse carrier pricing structures, regardless of their format. This smart assistance speeds up data integration, reduces manual errors and secures deployments, while keeping control in the hands of operational teams.



### WIIO – Stand J158

1- **ARIUS** is an RFID middleware solution that connects field equipment with the company’s information systems. It centralises, filters and validates collected data to ensure that only relevant information is transmitted to business applications, while simplifying the management and configuration of RFID devices.

**ARIUS**

2- **WIIO’s** Pallet-to-Person solution automates order preparation by bringing pallets directly to the operator, reducing movement and increasing throughput. Managed in real time via the **MAEVE** software platform, it optimises flows, robot allocation and workload balancing across workstations. Modular and scalable, it adapts easily to fluctuations in activity while improving ergonomics, operational quality and traceability.



### YUSEN LOGISTICS – Stand L085

**Yusen Logistics** is strengthening its position in healthcare logistics with a dedicated platform combining pharmaceutical expertise, transport, warehousing, last-mile delivery and digital solutions. This new organisation aims to deliver a more integrated, reliable and innovative end-to-end offering across Europe.



## Digital transformation

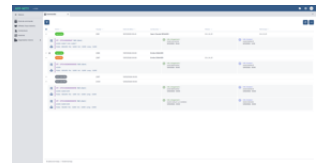
#### 4FLOW – Stand G184

The **end-to-end command center** developed by 4flow enables real-time monitoring and control of supply chain operations through an orchestration platform supported by dedicated teams. By connecting data, processes and decisions through AI, it improves coordination and enhances the ability to respond quickly to disruptions.



#### AKANEA – Stand K140

1- **Affinity** simplifies freight management by centralising mission tracking and document exchanges. Connected to AKANEA’s TMS, it streamlines communication between partners, improves traceability and secures operations in real time.



2- AKANEA offers a comprehensive support package for **AEO certification**, including assessment, compliance and status maintenance. In the context of the European Customs Union reform, this expertise enables companies to anticipate regulatory changes, secure their flows and turn customs into a sustainable competitiveness driver.



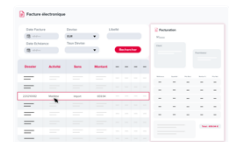
3 – AKANEA integrates an AI engine into its customs solutions to support tariff classification. Through semantic analysis of product descriptions, automatic customs code suggestions and inconsistency alerts, this innovation secures a critical step in the declaration process and reduces the risk of errors or adjustments.



4 – In partnership with **EcoTransIT**, AKANEA integrates CO<sub>2</sub> emissions calculation directly into its Freight Forwarding TMS. Carbon data becomes a fully operational indicator, supporting reporting, regulatory compliance and transport decision-making.



5 - AKANEA places **e-invoicing** at the core of its TMS, WMS and international freight management solutions, covering the entire lifecycle without operational disruption. This development combines productivity, traceability and compliance in anticipation of the 2026 regulatory reform.



6 - Through its partnership with **Soft&Co**, AKANEA integrates hazardous materials management into its **Xtent WMS**. ADR classification, storage incompatibility management, regulatory alerts and full traceability are directly embedded into logistics operations. The WMS thus becomes a proactive compliance tool, securing the handling of sensitive flows.

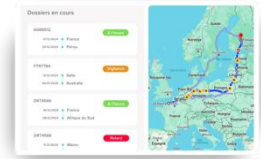


7 – Building on its partnership with **Spacefill**, AKANEA integrates AI capabilities into its **Xtent WMS** to automate order creation, reduce data re-entry and connect ERP systems, e-commerce platforms and logistics partners. Designed for operational teams, this automation saves time, enables rapid adoption and reduces errors in demanding environments.





8 – The **Visibility module** of the Freight Forwarding TMS consolidates key milestones and centralises data from multiple sources. It enables real-time tracking of goods in transit and automatic detection of discrepancies, giving teams the visibility needed to anticipate delays and prioritise critical shipments.



9 – **Proximity** is AKANEA’s 360° customer portal for road transport. It allows shippers to enter orders independently and track operations in real time. Natively connected to the TMS, it reduces data re-entry, improves traceability and enhances transparency.



### ALPEGA – Stand H146

**Alpega Transport Execution** is a unified platform that synchronises shippers, carriers and partners to manage transport operations with greater precision, transparency and speed. Quick to deploy, modular and connected to existing systems, it improves operational efficiency while keeping costs under control.



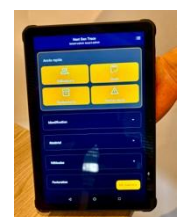
### ASSA ABLOY ENTRANCE SYSTEMS – Stand G154

**Smart Loading Bay** is based on the intelligent interaction between loading bay equipment, including doors, dock levellers, airlocks, wheel chocks and signalling systems. Interlocked and monitored in real time, these components are analysed against expected usage patterns. In the event of an anomaly, the **Insight** platform triggers immediate alerts to enable rapid response. Usage data can also be leveraged to optimise equipment, enhance safety and identify significant energy savings.



### AVENIR BUSINESS RESSOURCE – Stand L134

**Next Gen Trace** is a SaaS solution dedicated to traceability and inventory management, fully configurable without the need for specific development. Quick to deploy, it enables real-time tracking of flows, batches, serial numbers and multi-site movements.



### BK SYSTEMES – Stand G159

1-**SpeedFlow** is an AI agent integrated into Speed WMS, providing conversational access to system documentation. More intuitive and context-aware, it enhances user autonomy, simplifies access to information and improves operational efficiency.

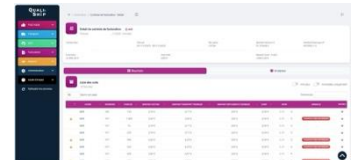


2- **Speed 3D** is the digital twin of **Speed WMS**. Directly connected to the WMS, it provides a dynamic view of flows, inventory and operations within the warehouse. This approach improves real-time visibility of operations, facilitates on-site analysis and provides a powerful tool to manage, simulate and optimise logistics processes.



### PREPAID PARCELS - Stand L132

This module automates both transport invoice checking and logistics pre-invoicing based on actual operational data. It detects billing discrepancies, reduces manual checks and streamlines exchanges with carriers. It also enables the generation of reliable pre-invoices, centralises pricing grids and provides better control over costs, margins and profitability.



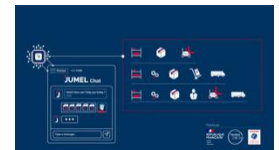
### CONTAINER EQUIPMENT AND SECURING - Stand L101

This new version of the tracker enables goods and containers to be monitored anywhere in the world, with real-time visibility over their location and key parameters such as temperature, humidity, light exposure and shocks. The solution improves shipment security, integrates easily with existing logistics systems and triggers automatic alerts in the event of anomalies. It therefore enhances flow control, operational responsiveness and customer transparency.



### DAHER – Stand M105

1- **LogBot by Daher** is an AI-powered virtual agent that accelerates the design and optimisation of logistics warehouses. Using a wide range of source documents, it quickly generates multiple scenarios and helps engineering teams make faster, more reliable and better-informed decisions.



2- With its integrated **Bin Picking** solution, Daher automates the picking of objects of varying sizes, shapes and weights for order preparation. The system combines a robot, end-effectors, vision systems, scanning and conveyor sensors to identify items, secure gripping and ensure reliable traceability. This automation reduces the physical strain of operations, limits musculoskeletal risks and allows employees to refocus on higher value-added tasks.



### HEXALY – Stand J173

**Hexaly Optimizer** combines artificial intelligence and advanced algorithms to quickly solve complex supply chain, routing and planning challenges. Its modelling capabilities help companies accelerate digital transformation, reduce costs and improve logistics performance.



### HP SitePrint – Stand M033

**HP SitePrint** is an autonomous layout-printing robot designed to automate floor marking in industrial environments such as warehouses, logistics centres and production sites. Using digital models, it prints full-scale layouts directly onto the ground with high precision, speed and repeatability. This automation accelerates layout projects, reduces execution errors and improves overall team efficiency.



### IER – Stand J171

**IER Smart Filtering** detects, filters and eliminates unwanted RFID reads without requiring any additional installation. Powered by self-learning AI, the solution immediately improves operational reliability and secures traceability data.



### KARDEX FRANCE – Stand K018

1- The **Intuitive Picking Assistant** improves picking speed, accuracy and ergonomics by projecting relevant information directly onto the picking area. More intuitive and customisable, it reduces errors, shortens training time and enhances overall intralogistics performance.



2- **Kardex PortScale** automates weighing operations on AutoStore ports to ensure accurate item counting and improved inventory reliability. It detects picking errors instantly, eliminates manual counting and speeds up order preparation. The solution helps reduce errors, improve SKU data quality and secure operations, including in automated environments.



### KLAREO – Stand F175

**KLAREO GO** is a mobile application designed to simplify the daily work of delivery drivers. It centralises tasks, route tracking, optimisation and invoicing to save time, reduce administrative workload and streamline last-mile operations.



### LIS FRANCE - Stand K142

LIS France introduces a new **WebSped mobile module** that enables greater involvement of subcontractors without requiring app downloads, thanks to QR code access. The company also unveils a module for precise ETA and ETD calculations within its **WinSped TMS**, improving anticipation and enabling more proactive alert management.



### PANOPTES – Stand K150

**Shipping Center V2** significantly upgrades a solution already recognised for standardising and managing shipments. Without changing operational practices, this new version improves ROI, reduces total cost of ownership and enhances agility, reliability and scalability.



### PROGLOVE (WORKAROUND) - Stand H150

**MAI** is a smart wearable assistant featuring AI-powered voice support to assist field operators in real time. Worn on the back of the hand, it allows natural interaction with information systems—receiving instructions, reporting issues or requesting assistance—without interrupting work. This hands-free approach reduces interruptions, improves ergonomics and streamlines operations.



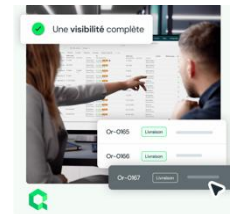
**PTV LOGISTICS OPERATIONS: LOGISTICS PROVIDERS & CARRIERS – Stand K167**

**PTV Mira** is an AI-powered logistics assistant designed to transform how teams plan, optimise and make decisions. Accessible through natural conversation, it enables users to query data and optimisation engines to obtain reliable answers, simulations and actionable recommendations within seconds.



**QARGO TECH LTD – Stand K171**

**Qargo TMS** is a cloud-native platform that centralises transport planning, execution and monitoring within a single interface. Its embedded AI automates administrative tasks, improves real-time visibility and helps reduce both costs and empty runs.



**SIGMA – Stand H167**

1- This solution provides a personalised delivery portal accessible via SMS or email, offering end customers detailed tracking of their orders. It enhances the delivery experience while enabling shippers to monitor and manage carrier performance.

2- Through integration with sensors, SIGMA enables both shippers and customers to visualise the temperature curve of transported goods throughout the journey. This ensures compliance with tolerance ranges upon delivery and improves the security of sensitive flows.



**SINARI – Stand J177**

1- Sinari is enhancing its TMS and FMS solutions to integrate electronic invoicing in line with new regulatory requirements. This development automates accounting and tax flows, improves traceability and turns a regulatory constraint into an operational optimisation lever.



2- The **Smart OT portal** automates the extraction of booking confirmations and transport documents from PDFs and emails. Connected to TMS systems, it eliminates duplicate data entry, speeds up processing and enables more efficient document management.



### TRANSITIC – Stand K072

The new version of **OpenWCS** modernises the interface and improves data readability for more intuitive operations management. Real-time monitoring, automated alerts, clear flow visualisation and scenario simulation strengthen decision-making and anticipation capabilities.



### WIIO - Stand J158

This video tracking solution captures, processes and enriches camera-based data to improve logistics traceability. It combines cameras, a visualisation platform and a mobile app to support dispute management, flow monitoring and load control. Its machine vision capabilities also enable parcel dimensioning, counting, empty/full zone detection and dock optimisation.

# ALTAIR

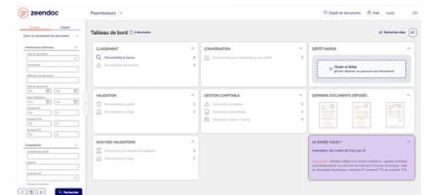
### ZEBRA TECHNOLOGIES - Stand H117

The **TC501/701 mobile terminal** is designed to digitise and automate logistics operations, from distribution centres through to delivery. It combines real-time tracking, proof of delivery, parcel scanning and localisation, while ensuring continuous connectivity and high field durability. With embedded AI capabilities, it accelerates workflows, improves traceability and reduces disputes, while supporting large-scale fleet management.



### ZEENDOC - Stand D181

Zeendoc enhances its dashboard with a more streamlined and customisable interface, designed for faster access to key functions. A new quick-upload block, direct access to activity, discreet notifications and flexible workspace organisation improve everyday usability. The update is also optimised for mobile, making it easier to access documents and key actions on the go.



### ZENITEL FRANCE – Stand E167

1- The **ZDD-1** is a touchscreen audio-video intercom combining a discreet design, excellent sound quality and HD video. It ensures clear communication, high reliability and advanced features meeting security and cybersecurity requirements.

2- The **ZSD-1** is a compact IP intercom designed for easy integration into access control systems, particularly in narrow door frames. It combines HD audio, full-duplex communication, advanced noise reduction and wide-angle HD video to ensure clear and reliable interactions.



3 - **VAIA** is a compact all-in-one solution designed for public address, background music and installations requiring high audio quality, redundancy and advanced supervision. Its scalable IP architecture, 1U format and certified performance make it a reliable, high-performance and easy-to-deploy solution.





### **About SITL**

The International Transport and Logistics Exhibition has been bringing together key French and international players in the industry for over 40 years. This must-attend event covers 10 key sectors, including transport and logistics services, intralogistics, automation and robotics, packaging, technologies, alternative energies and cold chain logistics. Industry and retail professionals attend SITL to discover innovative solutions, identify trends and explore real-world use cases.

### **About RX**

[RX](#) is a global leader in events and trade shows. RX leverages its sector expertise, data and technology to drive the development of businesses, communities and individuals. Operating in 25 countries and covering 41 sectors, RX organises nearly 350 events a year. [RX](#) is committed to creating an inclusive working environment for all its employees. RX enables businesses to grow through data and digital solutions. RX is part of RELX, a global provider of data, analytics and decision-making tools for professionals and businesses. For more information, visit [www.rxglobal.com](http://www.rxglobal.com).

[RX France](#) creates high-value-added networking platforms that are leaders in around fifteen different markets. Among RX France's flagship events, which are must-attend gatherings both nationally and internationally, are MIPIM, MIPCOM, Batimat, Pollutec, EquipHotel, SITL, IFTM, Big Data & AI Paris, MAPIC, Paris Photo, Maison&Objet\* and many others... Our events take place in France, Hong Kong, Italy and Mexico. For more information, visit [www.rxglobal.fr](http://www.rxglobal.fr)

\*Organised by SAFI, a subsidiary of RX France and Ateliers d'Art de France

### **About RELX**

RELX is a global provider of data, analytics and decision-making tools for professionals and businesses. RELX operates in over 180 countries and territories, with offices in around 40 countries worldwide. RELX employs over 37,000 people, more than 40% of whom are based in North America. Shares in RELX PLC, the parent company, are listed on the London, Amsterdam and New York stock exchanges under the following symbols: London: REL; Amsterdam: REN; New York: RELX.

\*Note: Current market capitalisation can be found at <http://www.relx.com/investors>

### **Press contacts**

Zmirov Communication:

Christophe Giraudon / Constance Milojevic

06 70 12 37 10 / 06 64 68 94 75